



The Serengeti, Masai Mara, Samburu, Ol Pejeta, & Nairobi

Why Kenya, East Africa, and the Great Migration?

There's truly nothing else like it on this planet! When it comes to the sheer wonder of the game parks, the pulse-pounding adventure, top-tier facilities, unmatched game viewing, and the dazzling multitude of animals, Kenya stands unrivaled. The legendary "Great Migration" is the grandest land mammal migration you'll ever witness on earth. We're talking about millions of animals making their dramatic trek across some of the planet's most stunning ecosystems. It's nature's greatest spectacle of survival, painting the Serengeti Plains and the Masai Mara with life in its rawest form. Imagine over a million wildebeest, hundreds of thousands of zebras, plus a vibrant orchestra of wildlife embarking on this unparalleled journey—and we'll be right there in the midst of it all.

Our August safari aligns with the peak travel dates, taking you straight to the heart of East Africa, into the captivating world of the Masai Mara, Serengeti, and the iconic Great Migration. Kenya holds the crown as the most wildlife-rich territory on earth. No other destination in Africa, or worldwide, even comes close. With 50 remarkable wildlife parks, we ensure you experience the most iconic ones: the Serengeti, Masai Mara, Samburu, and Ol Pejeta.

Ready for an adventure of a lifetime? Dive into the wild wonders of Kenya!

SAFARI LAND PRICE:

Based on double occupancy, per person: **\$6,899.00** (Includes \$500 discount)

Single supplement: **Add \$899.00**

Tips for guides - \$180 per person will be collected at time of payment

Airfare is additional

Credit card payments incur a 4% service charge

FINAL PAYMENT:

Due at time of reservation

CANCELLATION AND REFUND:

All payments are non-refundable once paid



BLUE PLANET
VACATIONS
EXPLORE YOUR WORLD

For reservation call
Blue Planet Vacations
801-295-5999



The Great Migration Itinerary

Aug. 19 & 20 – You will take a flight from USA to Nairobi, Kenya. You will arrive the following day, where you will be met at airport and transferred to the Windsor Golf Hotel & Country Club.

Aug 21 – After breakfast we checkout and drive approximately 5 hours to Samburu National Reserve. Lunch, afternoon at leisure before going out for an evening game drive at 4:00 p.m. In this part of northern Kenya is where you will find gerenuk, giraffe, gazelle, oryx, grevy zebra, leopards and massive herds of elephants and crocodiles of Ewasonyiro. Dinner and overnight at Samburu Simba Lodge.

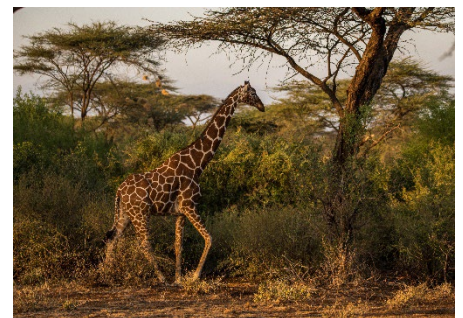
Aug 22 - Early morning game drive before breakfast. This is the best time to see lions and the leopard. We will return to the lodge for breakfast. Today we will visit the Samburu village. Afternoon game drive at 3:30 p.m., dinner and overnight in Samburu.

Aug 23 - Early morning game drive before breakfast. Pack and leave for the Sweetwater Lodge. The drive is approximately 3 hours. Lunch will be served when we arrive. Afternoon at leisure before going out for an evening game drive at 4:00 p.m. Dinner and overnight at the Sweetwater Lodge

Aug 24 - Early morning game drive, return to lodge for breakfast. After breakfast we will visit the Sweetwaters Chimpanzee Sanctuary. Back to the Lodge for lunch. Evening game drive we will search for the elusive Black Rhino, only 2,000 of these magnificent animals still live in the wild, and Sweetwaters is one of the best places in the world to observe the Black Rhino in the wild. Dinner and overnight at Sweetwaters.

Aug 25 - Early morning game drive before breakfast. After breakfast we will pack and leave for the Masai Mara. We will fly to the Mara in a Bush Plane. The Masai Mara is where the “Great Wildebeest Migration” takes place, we will arrive in time for lunch, afternoon at your leisure, game drive at 4:00 pm. Dinner and overnight at the exclusive Ashnel Tented Camp located right on the famous Mara.

Aug 26 - Early morning game drive before breakfast. After breakfast we will return to Mara River crossing areas to observe the large herds of migrating Wildebeest & Zebra hoping to catch them crossing the Mara River. Return for lunch. Evening game drive at 4:00 p.m. to visit the many Lion prides near the Mara River. Dinner & Overnight at the Ashnel Tented Camp.



Aug 27- Early morning game drive before breakfast. Breakfast out on the Savana watching the herd of Wildebeest & Zebra. After breakfast we will continue to observe multitude of animals in the Mara – Serengeti Eco System; Lions, Cheetah, Black Rhino, Elephants, Cape Buffalo and many species of Antelope. Return from lunch. Evening game drive at 4:00 p.m. to catch more of the wildlife and the amazing sunset on the Mara for the last time. Dinner & Overnight at the Ashnel Tented Camp.



Aug 28- Early morning game drive, return for breakfast. After breakfast we will pack and drive to Nairobi. In route to Nairobi we will stop at Lake Naivasha and take a boat ride to see the Hippos. We will check into the Naivasha Simba Lodge for one night.

Aug 29 – After breakfast we will make the 3 hour drive to Nairobi where we will spend the day. On our way to Nairobi we stop and view the Rift Valley. We will go to the Giraffe center, the Karen Blixen home from “Out of Africa” and the Bead Center. We will stop at the open market in Kenya where you can shop for last minute items or grab a snack. After dinner we will be transferred to the International Airport for our flight home.



Aug 30- Arrive in the USA

Documents Required & Information:

- USA passport valid for at least six months beyond travel with at least two blank pages
- Kenya tourist visa (additional cost)
- Driver/guide gratuities (Suggested hotel, driver, & guide gratuities of \$180 are in addition to the safari cost and will be collected with final payment.)

For Reservations call Blue Planet Vacations

Phone: **801-295-5999**

Email: info@bptrav.com

Terms and conditions

INTERNATIONAL TRIPS: For all tours and cruises that include international air, a valid passport is required and must be valid for at least 6 months from the return date of the trip. Blue Planet Vacations must receive a copy of your passport information page by final payment date. Airlines have strict policies concerning name changes/corrections after tickets have been issued. If a name change/correction is required on your ticket, you will be required to cover the cost of any fees.

TERMS AND CONDITIONS: Blue Planet Travel Service DBA Blue Planet Vacations, ("Agent") gives notice that all services, reservations and arrangements for transportation, cruise, conveyance, hotel or lodging of any type, meals, sightseeing services, or any other activities made by Agent, are made by Agent as dual agent for the traveler/passenger and for the air carriers, hotels, sightseeing companies, transportation companies, cruise lines, and other companies (Suppliers) providing services for this program. As such, Agent shall not be liable for injury, damage, loss, accident, delay, or irregularity which may be occasioned either by reasons of defect in any vehicle or mode of transportation, through the acts, defaults, financial difficulty, bankruptcy, or omissions of the Supplier or person engaged in carrying out the arrangements of the trip or otherwise in connection therewith. Agent is not liable for delays and/or cancellations of services and resultant expenses or loss caused by acts of God, weather, disaster, government regulations, sickness or death, quarantine, strikes, war, terrorism, social or labor unrest, local laws, mechanical or construction difficulties, curtailment or disruption of transportation, abnormal conditions or other situations, actions, omissions or conditions outside Agent's control. Agent is not liable for loss of, or damage to, baggage or personal possessions. Agent and Supplier reserve the right to alter or cancel the itinerary or substitute services as conditions require or for the safety of traveler/passenger. Passengers must be in good health and able to care for their own needs. Please contact us regarding any health concerns you may have or if you need to bring any specialized medical equipment such as wheelchairs, oxygen tanks, C-Pap, etc. so that we can determine if Supplier can accommodate your equipment. Tour directors on the trip cannot be of assistance with such needs. We reserve the right to remove travelers/passengers from the group at their own expense if the care of or actions of a traveler/passenger become detrimental to the functioning of the tour. Payment of deposit(s) as outlined in this agreement shall be deemed consent to be bound by the terms and conditions of this agreement. Airline schedule changes, mechanical or weather delays may affect flight times. Your connecting flights and/or transportation to and from the tour start and end point, whether issued by Blue Planet Vacations or on your own arrangement, may be affected. Blue Planet Vacations is not responsible for misconnections, delays, and/or cancellations.